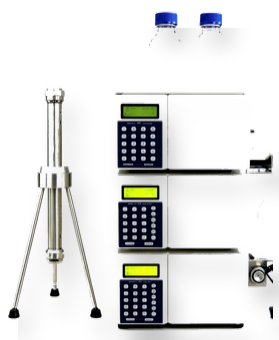


# LC500 GPC Gel Permeation Cleanup System

## LC500 GPC | Chromatography Systems

Gel permeation cleanup system for sample purification before instrumental analysis.



### Key Features

- GPC cleanup workflow for complex sample matrices
- Supports laboratory pretreatment before chromatography or spectroscopy analysis
- Useful for pesticide residue, food safety, and environmental testing sample cleanup
- English PDF brochure available for international inquiry

### Typical Applications

- Pesticide residue cleanup
- Food safety laboratories
- Environmental sample pretreatment
- Complex matrix purification

### Selection Reference

<b>Instrument Type</b>	GPC gel permeation cleanup system
<b>Function</b>	Sample cleanup and matrix removal
<b>Typical Configuration</b>	LC pump, GPC column, detector, and collection/control module
<b>Documentation</b>	English PDF brochure available
<b>Voltage</b>	Confirm voltage and plug standard before quotation
<b>Document Status</b>	English PDF version for international product selection

Final configuration, accessories, voltage, plug standard, documentation scope, and delivery details should be confirmed before quotation.

## Product Views

